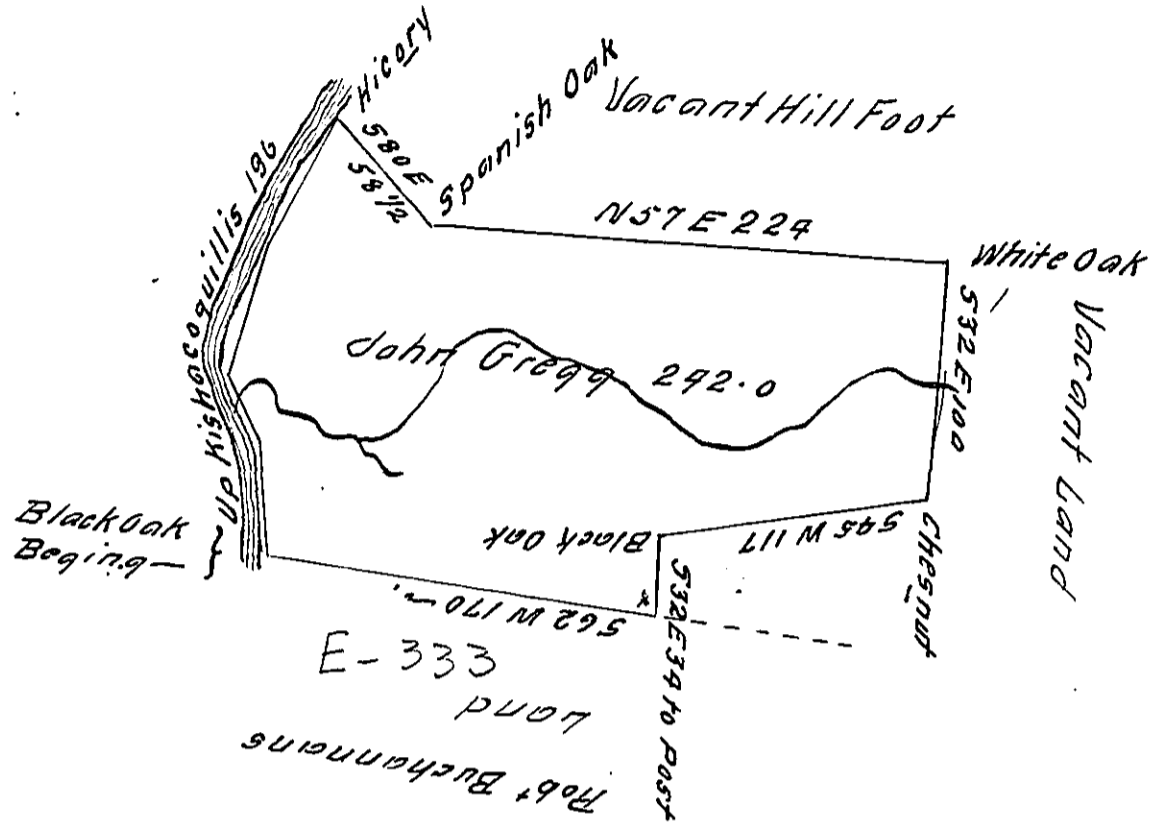


*Courses and Distances
Up Kishacoquillis Creek*

N 40 W 41 -
N 64 W 32
N 17 W 85
N 7 W 38
796



*The Draught of a Tract of Land called St Gregory Situate on
Kishacoquillis Creek Cumberland County containing Two Hundred
Forty Two Acres with the usual Allowance of Six Percent for Roads -
Surveyed the 16th day of June Anno Dom 1767 In Pursuance of an
Order of Survey to John Gregg - Bearing date at Philad^a the 13th
day of March Anno Dom 1767 and Numbred 3063 -
To John Lukens Esq^r 56 } P.
of Pennsylvania - W^m Macclay D.S.*

*IN TESTIMONY that the above is a copy of the original remaining on file in
the Department of Internal Affairs of Pennsylvania, made
conformably to an Act of Assembly approved the 16th day of
February, 1833, I have hereunto set my Hand and caused
the Seal of said Department to be affixed at Harrisburg,
this Sixth day of May 1912*

Henry Houch
Secretary of Internal Affairs.